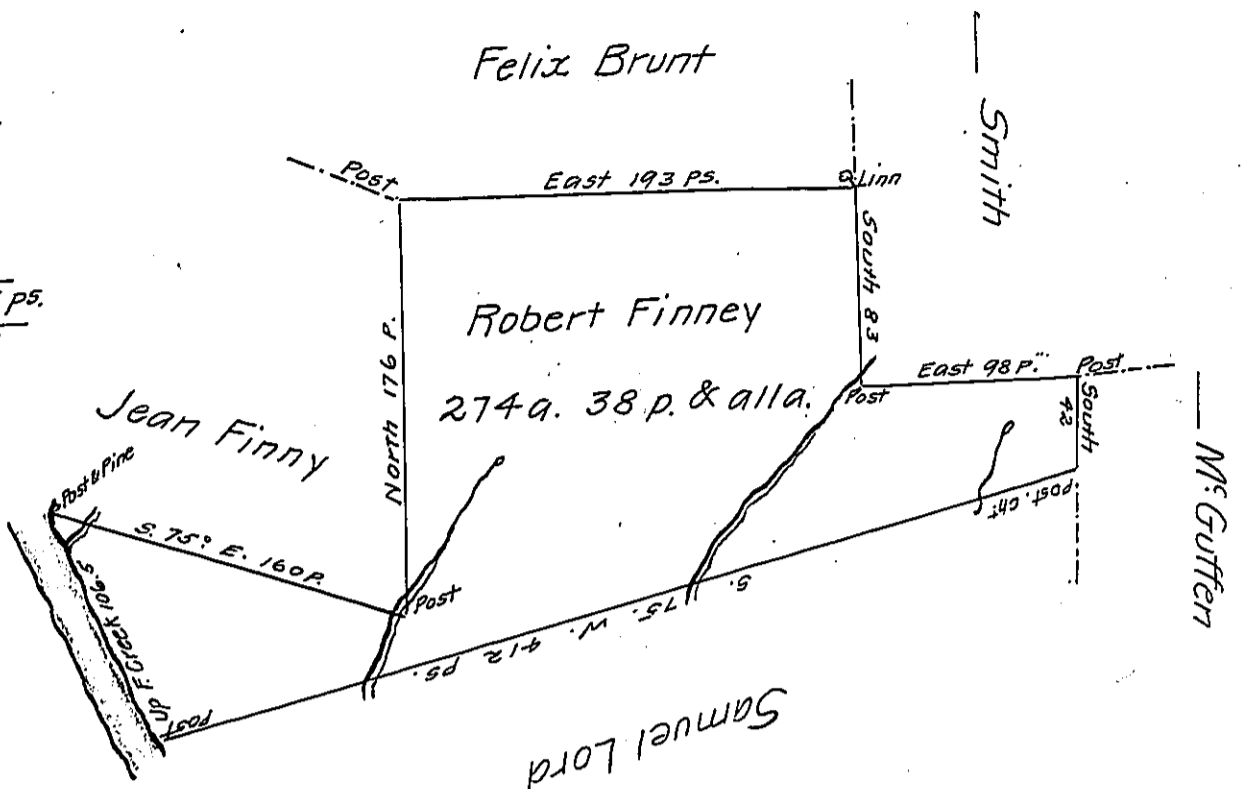


River Courses
 N. 16 1/2. W. 57
 N. 35. W. 40.5
 N. 39. W. 9
106.5 ps.



Situate on the East side of and adjoining French Creek
 in Allegheny County, Containing 274 a. 38 perches and allowance of Six pr. Cent
 for Roads &c. Surveyed the 27th. Day of May 1794 In pursuance of his im-
 provement Dated the 10th. day of March 1793.

Wm. Stoner Dy. Sr.

To Danl. Brodhead Esqr. }
 Surveyor General }

IN TESTIMONY that the above is a copy of the original remaining on file in
 the Department of Internal Affairs of Pennsylvania, made
 conformably to an Act of Assembly approved the 16th day of
 February, 1833, I have hereunto set my Hand and caused
 the Seal of said Department to be affixed at Harrisburg,
 this second day of June 1906

Loac P. Simon
 Secretary of Internal Affairs.